

APPENDIX F

**Selected photographs of benthic macroinvertebrate
taxa sampled from the Carmel River (magnification 15-25x)**



Baetis sp. (mayfly); Carmel R.; spring 2003



Rhithrogena sp. (mayfly); Carmel R.; fall 2009



Tricorythodes sp. (mayfly); Carmel R.; spring 2003



Ephemerella sp. (mayfly); Carmel R.; fall 2009



Epeorus sp. (mayfly); Carmel R.; fall 2009



Serratella sp. (mayfly); Merced R.; genus also found in Carmel R.



Isoperla sp. (stonefly); Carmel R.; fall 2009



Calineuria californica (stonefly); Carmel R.; fall 2009



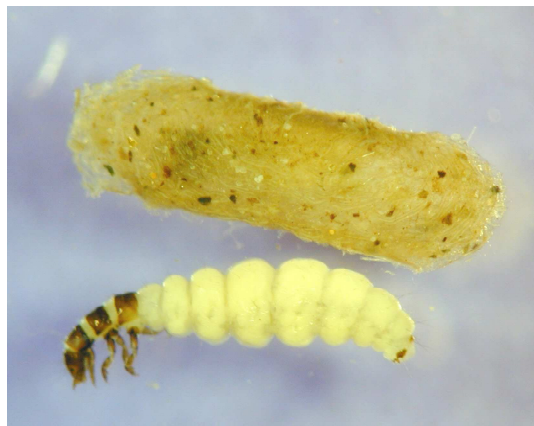
Malenka sp. (stonefly); Carmel R.; fall 2009



Leucotrichia pictipes (caddisfly); Carmel R. fall 2002



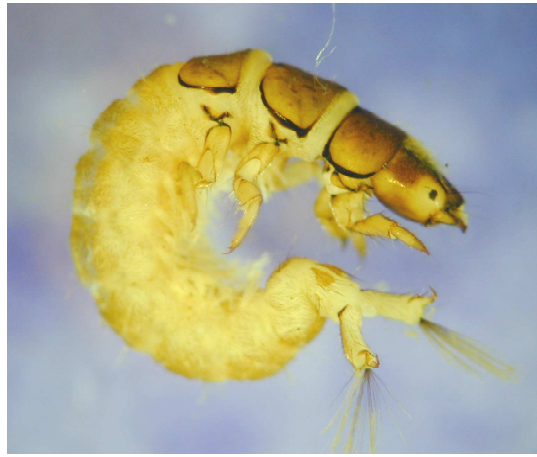
Rhyacophila sp. (caddisfly); Carmel R.; fall 2009



Ochrotrichia sp. (caddisfly); Carmel R.; fall 2002



Wormaldia sp. (caddisfly); Carmel R.; fall 2002



Hydropsyche sp. (caddisfly); Carmel R.; fall 2002



Cheumatopsyche sp. (caddisfly); Carmel R.; fall 2002



Lepidostoma (caddisfly); Carmel R.; fall 2002



Micrasema sp. (caddisfly); Carmel R.; spring 2003



Hydraena sp. (beetle); Carmel R.; fall 2009



Optioservis sp. (riffle beetle); Carmel R.; fall 2002



Ampumixus sp. (riffle beetle); Carmel R.; fall 2009



Orthocladiinae (midge); Carmel R.; fall 2002



Tanytarsini (midge); Carmel R.; fall 2002



Antocha sp. (crane fly); Carmel R.; fall 2002



Simulium sp. (black fly); Carmel R.; fall 2002



Argia sp. (damselfly); Carmel R.; spring 2003



Ostracoda (seed shrimp); Carmel R.; spring 2002



Sperchon sp. (water mite); Carmel R.; spring 2003



Naididae (segmented worm); Carmel R.; fall 2002



Hyalella sp. (scud); Carmel R.; fall 2002