



## General Manager's Report Item 14:

Status Report on Cal-Am Compliance  
with SWRCB Orders and Seaside Basin  
Decision as of April 1, 2019

*Meeting Date: April 15, 2019*

*Staff contact: David J. Stoldt*

# Actual versus Target Production Water Year 2019 – Oct to Mar (All Values in Acre-Feet)

Year-to-Date Values	MPWRS				MPWRS Total
	Carmel River Basin <sup>2, 6</sup>	Seaside Groundwater Basin		Ajudication Compliance	
		Coastal	Laguna Seca		
Target	3,910	1,100	0	1,100	<b>5,010</b>
Actual <sup>4</sup>	3,508	1,206	117	1,322	<b>4,830</b>
Difference	402	<b>-106</b>	<b>-117</b>	<b>-222</b>	<b>180</b>
WY 2018 Actual	2,979	1,643	141	1,785	<b>4,763</b>

1. This table is current through the date of this report.
2. For CDO compliance, ASR, Mal Paso, and Table 13 diversions are included in River production per State Board.
3. Sand City Desal, Table 13, and ASR recovery are also tracked as water resources projects.
4. To date, 949 AF and 273 AF have been produced from the River for ASR and Table 13 respectively.
5. All values are rounded to the nearest Acre-Foot.
6. For CDO Tracking Purposes, ASR production for injection is capped at 600 AFY.
7. Table 13 diversions are reported under water rights but counted as production from the River for CDO tracking.

# Actual versus Target Production Water Year 2019 – Oct to Mar (All Values in Acre-Feet)

Year-to-Date Values	Water Projects and Rights			Water Projects and Rights Total
	ASR Recovery	Table 13 <sup>7</sup>	Sand City <sup>3</sup>	
Target	0	170	150	<b>320</b>
Actual <sup>4</sup>	0	273	73	<b>346</b>
Difference	<b>0</b>	<b>-103</b>	77	<b>-26</b>
WY 2018 Actual	0	98	88	<b>186</b>

1. This table is current through the date of this report.
2. For CDO compliance, ASR, Mal Paso, and Table 13 diversions are included in River production per State Board.
3. Sand City Desal, Table 13, and ASR recovery are also tracked as water resources projects.
4. To date, 949 AF and 273 AF have been produced from the River for ASR and Table 13 respectively.
5. All values are rounded to the nearest Acre-Foot.
6. For CDO Tracking Purposes, ASR production for injection is capped at 600 AFY.
7. Table 13 diversions are reported under water rights but counted as production from the River for CDO tracking.

# Production for Customer Service for Cal-Am: Water Year 2019 (All Values in Acre-Feet)

## Monthly Production from all Sources for Customer Service: WY 2019

	Carmel River Basin	Seaside Basin	ASR Recovery	Table 13	Sand City	Mal Paso	Total
Oct-18	491	369	0	0	16	8	884
Nov-18	456	304	0	0	21	8	790
Dec-18	468	180	0	0	11	8	667
Jan-19	395	161	0	81	19	8	664
Feb-19	363	147	0	91	7	8	616
Mar-19	411	161	0	101	0	8	682
Apr-19							
May-19							
Jun-19							
Jul-19							
Aug-19							
Sep-19							
<b>Total</b>	<b>2,585</b>	<b>1,322</b>	<b>0</b>	<b>273</b>	<b>73</b>	<b>50</b>	<b>4,303</b>
WY 2018	2,540	1,785	0	98	88	28	4,538

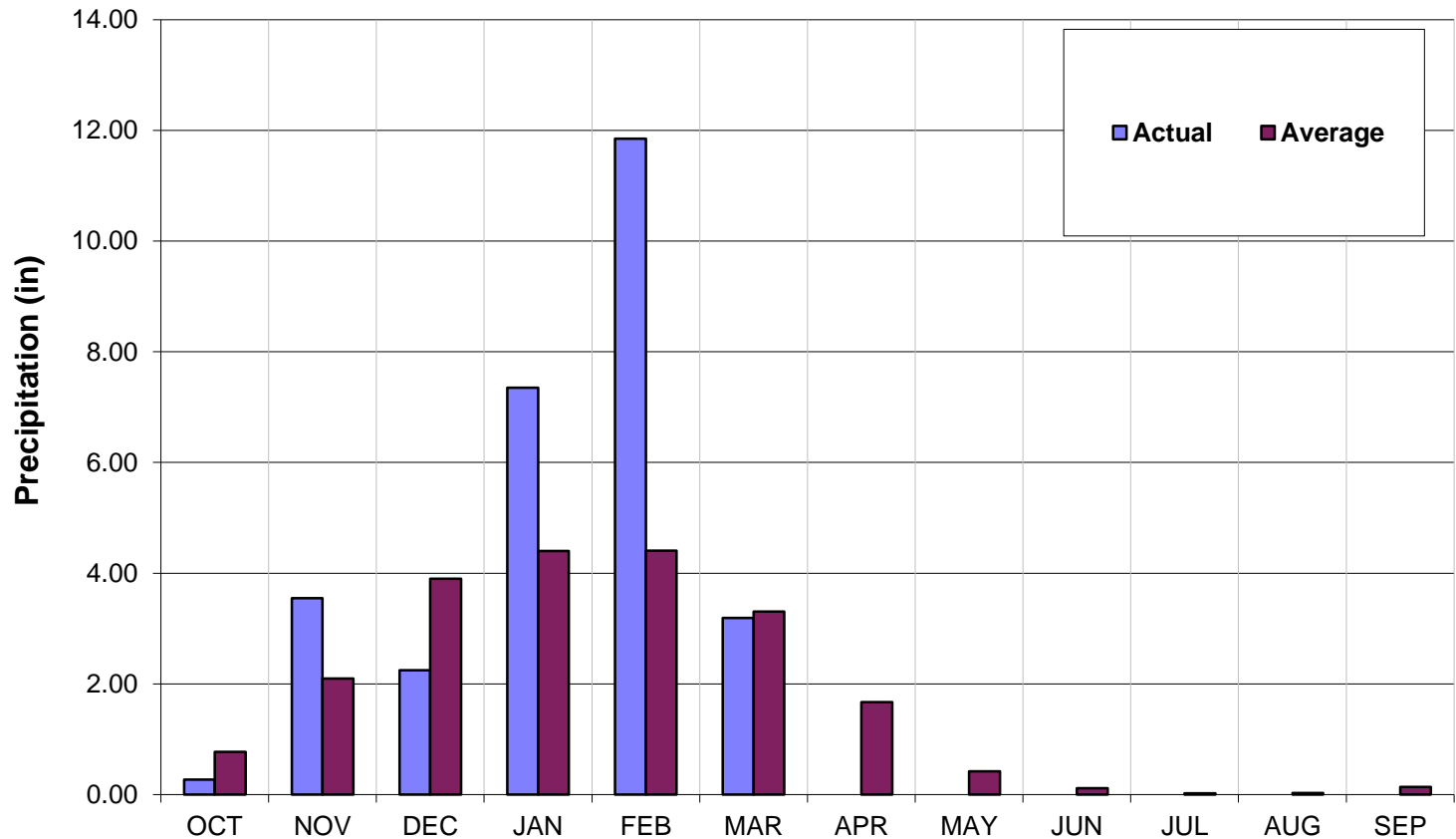
1. This table is produced as a proxy for customer demand.
2. Numbers are provisional and are subject to correction.

### Rationing Trigger: WY 2019

12 Month Moving Average <sup>1</sup>	9,732	10,130	Rule 160 Production Limit
--------------------------------------	-------	--------	---------------------------

1. Average includes production from Carmel River, Seaside Basin, Sand City Desal, and ASR recovery produced for Customer Service.

# Monthly Recorded Rainfall at San Clemente Rain Gage: Water Year 2019



# Daily Recorded Rainfall at San Clemente Rain Gage: Water Year 2019

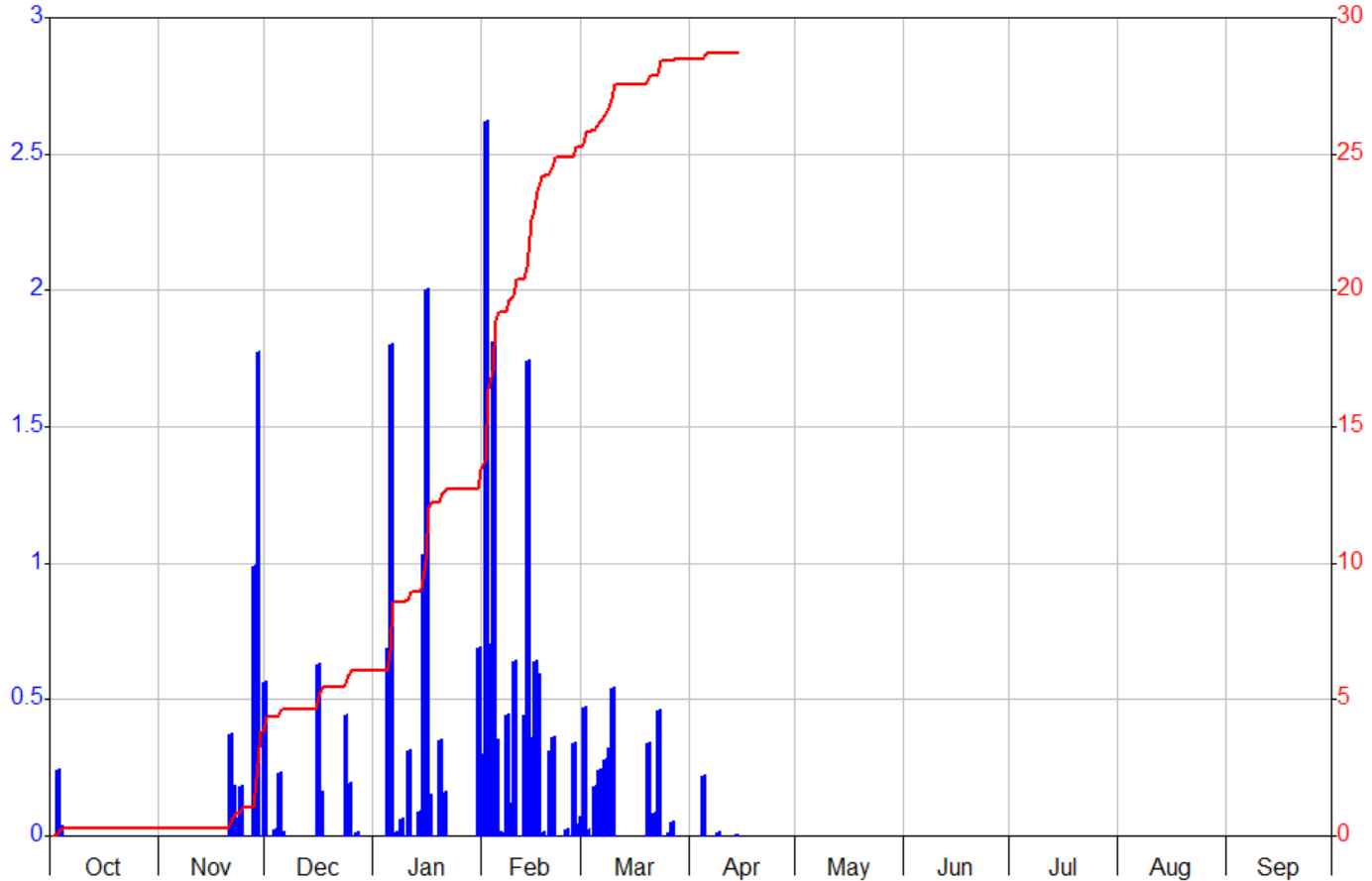
## Monterey Peninsula Water Management District

HYPLOT V133 Output 04/15/2019

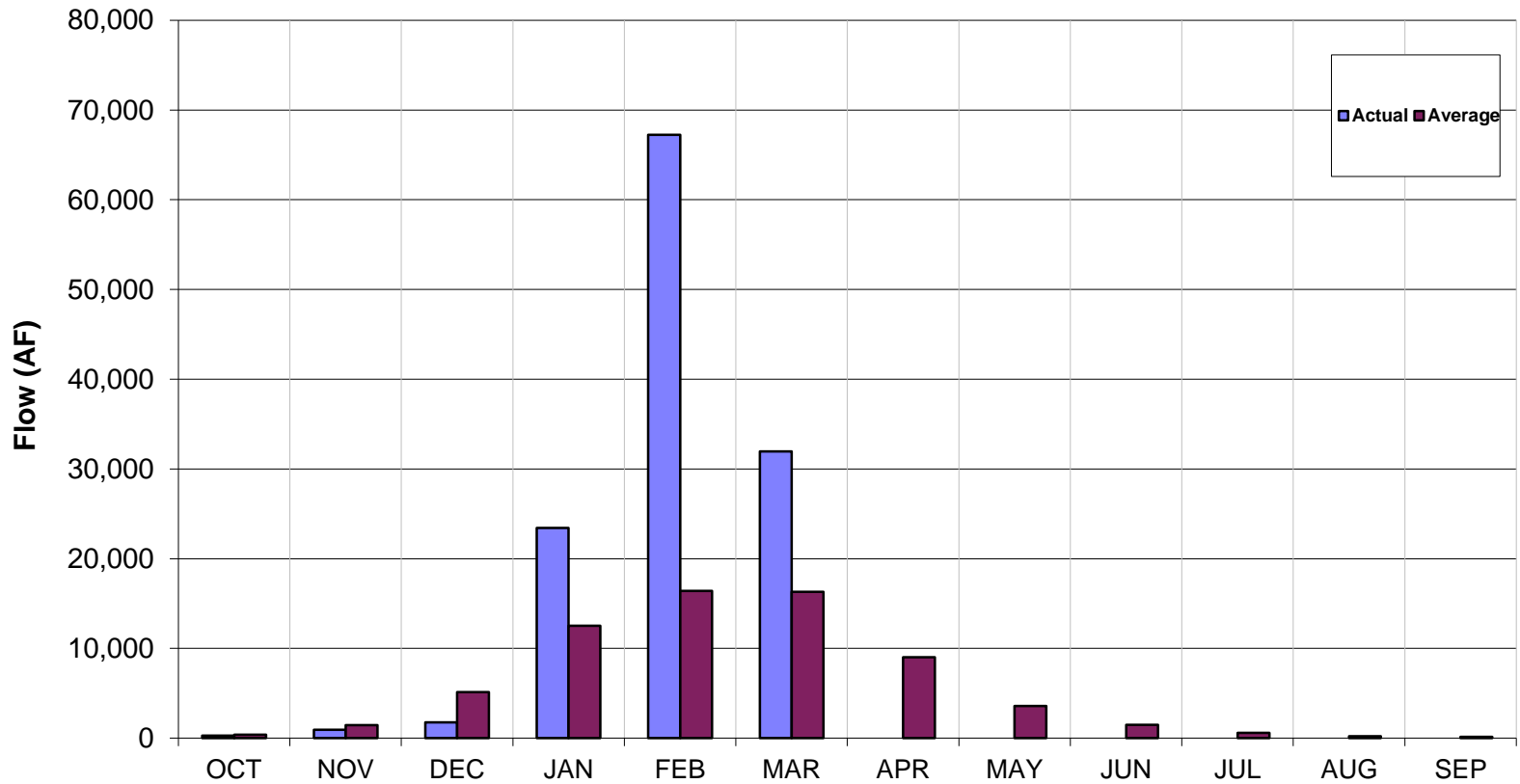
Period 1 Year Plot Start 00:00\_10/01/2018  
 Interval 1 Day Plot End 00:00\_10/01/2019

2018/19

█ SC\_RAIN San Clemente Rainfall Rainfall (in) Total  
— SC\_RAIN San Clemente Rainfall Rainfall (in) Cumulative LOGGNET  
— SC\_RAIN San Clemente Rainfall Rainfall (in) Cumulative LOGGNET



# Estimated Unimpaired Carmel River Flow at Sleepy Hollow Weir: Water Year 2019



## ASR Injection Summary WY 2019

