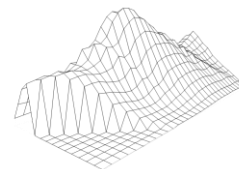


# Post-2020 Census Redistricting: Orientation and Recommendation from your Redistricting Advisory Commission (RAC)

---

MONTEREY PENINSULA WATER MANAGEMENT DISTRICT

MARCH 21, 2022



Shelley Lapkoff, Ph.D. & Jeanne Gobalet, Ph.D.  
LAPKOFF & GOBALET DEMOGRAPHIC RESEARCH, INC.

[www.demographers.com](http://www.demographers.com)

Oakland and Saratoga, California

About

Lapkoff &  
Gobalet  
Demographic  
Research, Inc.

LGDR

**1990-present: LGDR helped Monterey County jurisdictions district and redistrict**

**LGDR helped MPWMD move from at-large to by-district elections in 1991**

**In 2011, MPWMD Director- Division Area boundaries did not need adjusting; populations were still balanced.**

**LGDR has been providing 2021-22 redistricting services throughout Monterey County**

# Agenda

- **Overview of Redistricting**
  - What is redistricting?
  - Why redistrict?
  - Current Election Districts (2002)
  - Legal requirements (that demographers follow)
  - Communities of interest
- **RAC Recommended Plan (Plan 4)**

# What is Redistricting?

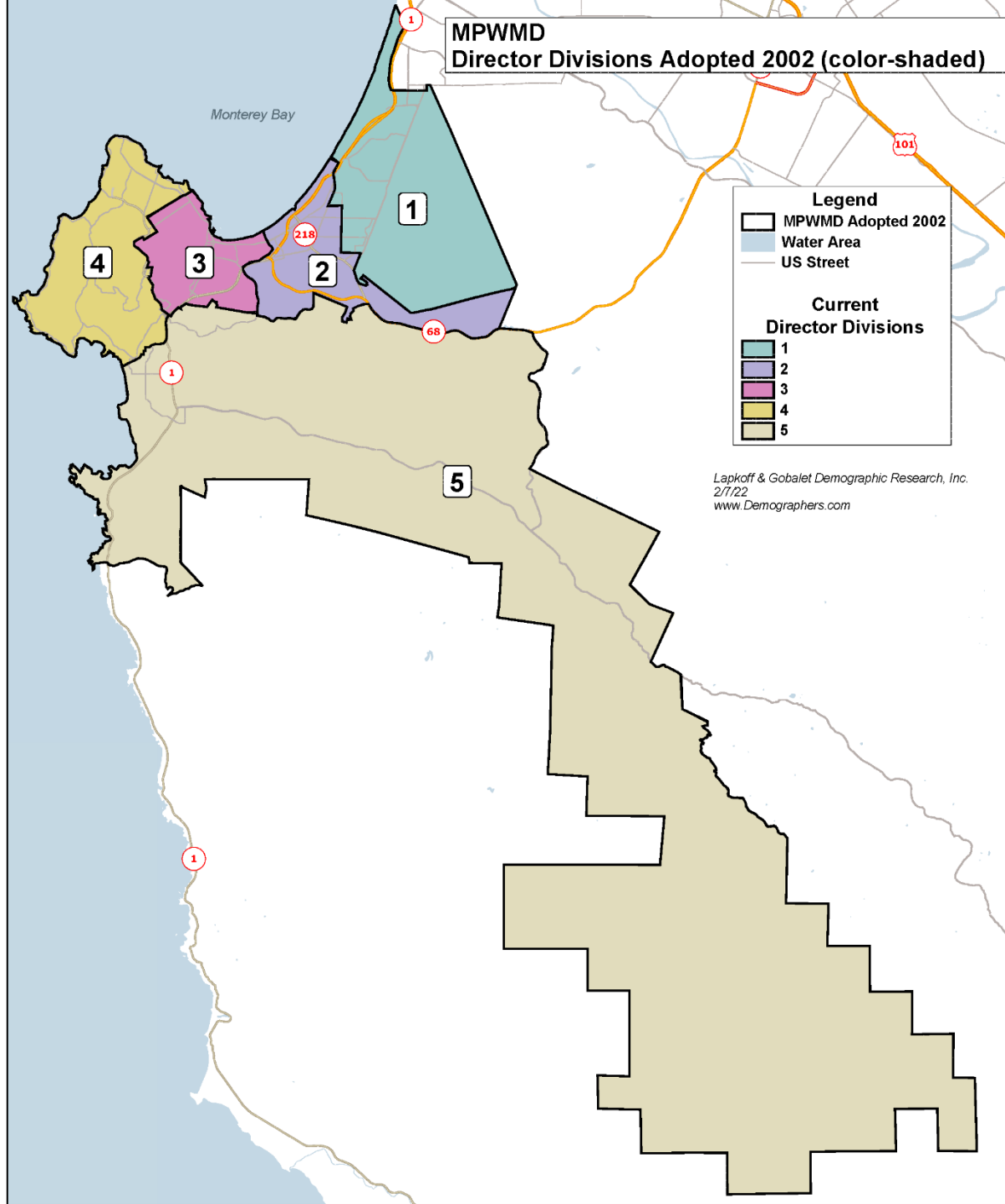
**Every 10 years, each jurisdiction that elects board members by Area must redistrict (adjust Area boundaries to have equal total populations)**

**Federal and state laws apply**

**Each special district must adopt new election district boundaries before April 17, 2022 (by law)**

**The new districts will be used until after Census 2030 data are available**

**Current Directors complete their terms of office even if they no longer live in the Area they were elected to represent**



# Current MPWMD Election Districts (color-shaded)

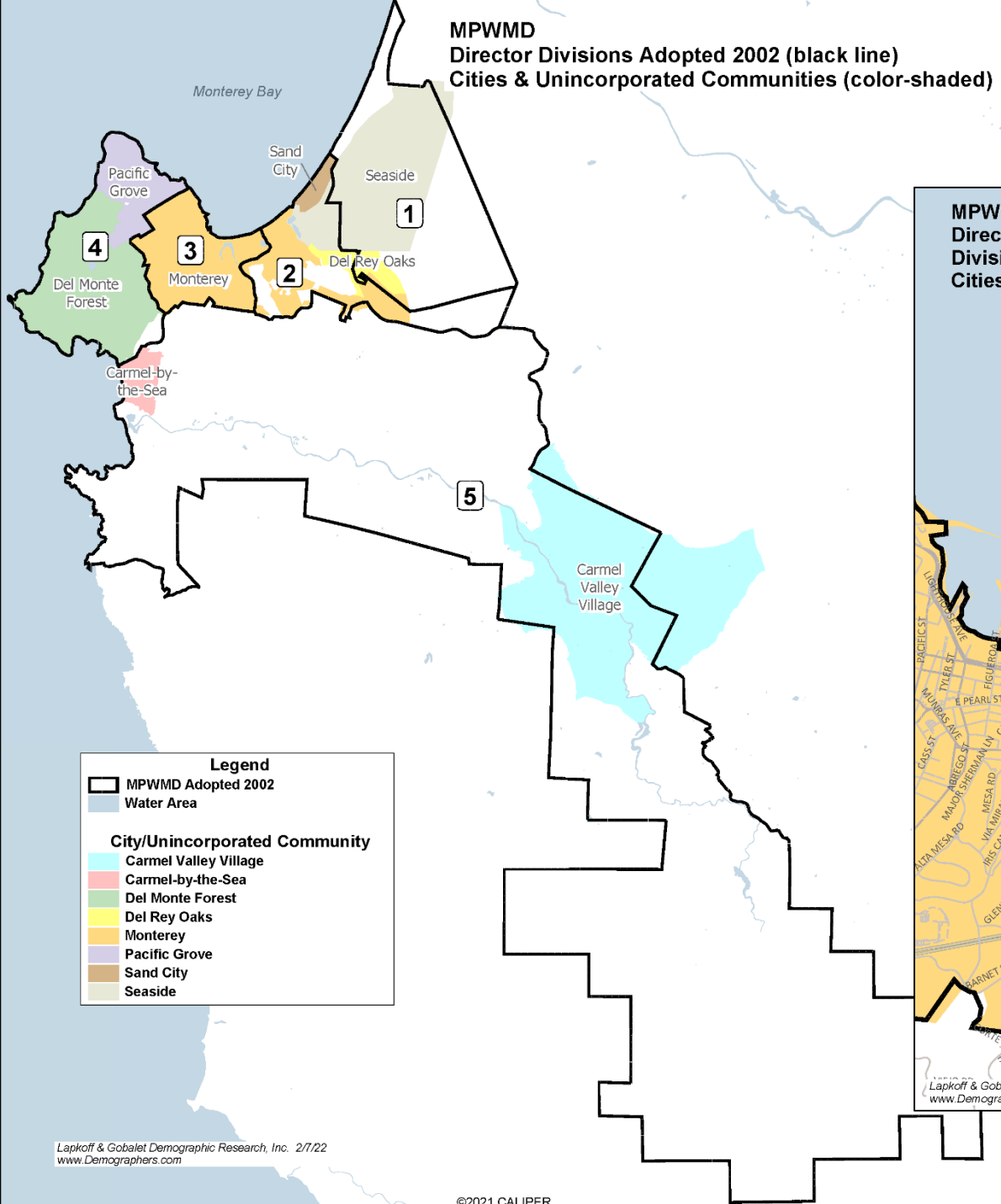
adopted in 2002

Director Division populations were still balanced in 2010, so boundaries were not adjusted

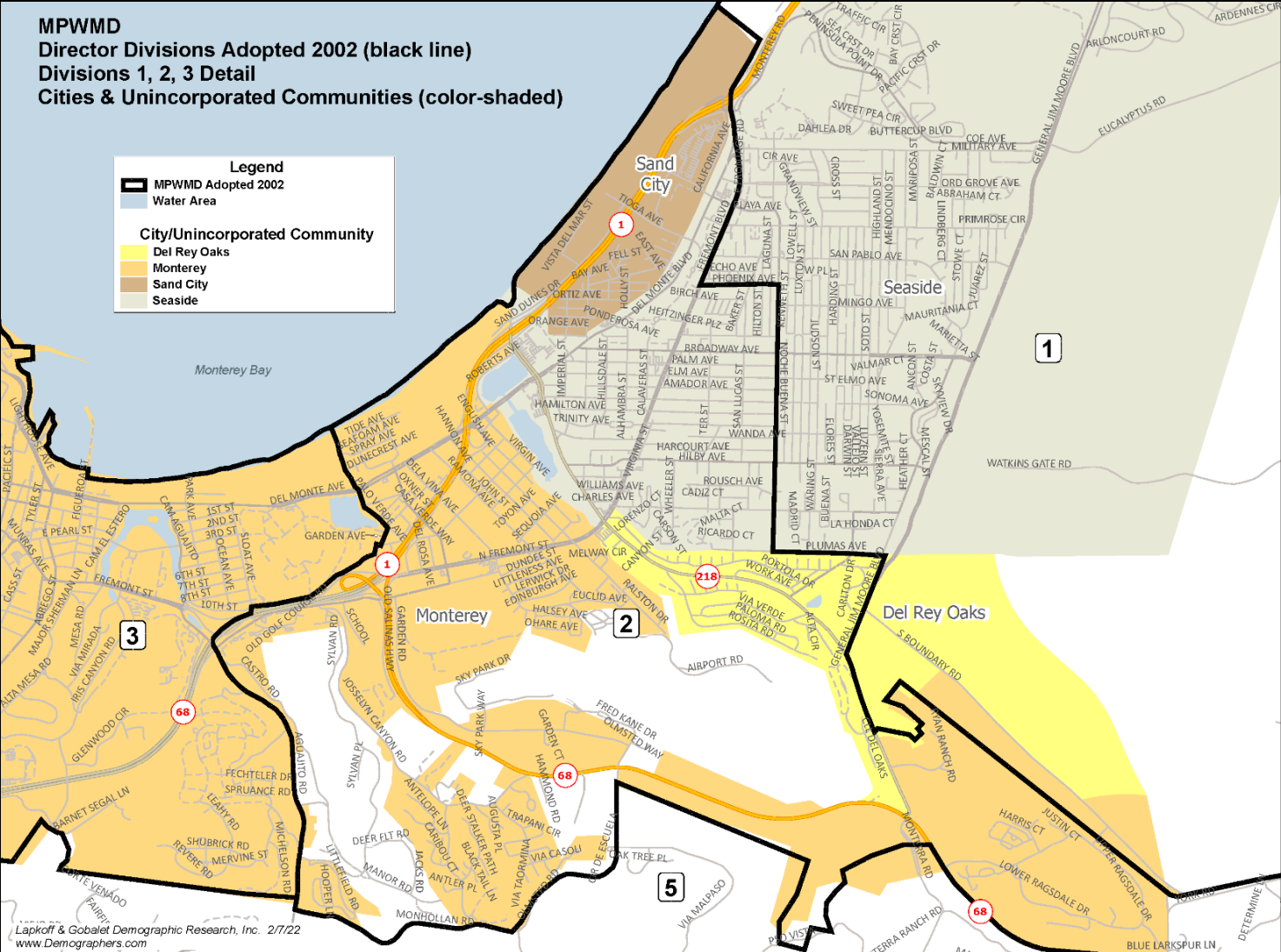
# Current MPWMD Election Districts

## Cities/Unincorporated Communities (color-shaded)

MPWMD  
 Director Divisions Adopted 2002 (black line)  
 Cities & Unincorporated Communities (color-shaded)



MPWMD  
 Director Divisions Adopted 2002 (black line)  
 Divisions 1, 2, 3 Detail  
 Cities & Unincorporated Communities (color-shaded)



# Legal guidelines that demographers follow:

## ✓ Federal law & Supreme Court Decisions:

- Population equality
- Voting Rights Act
- No racial gerrymandering



## ✓ State Election Code

Crystal

Templates for PowerPoint

## #1 Priority: Population Equality

Election Districts need to be relatively equal in population

**Ideal Election District population** = 1/5 of the 2020 Census population:

MPWMD's 105,911 total 2020 population;  $1/5 = 21,182$

**Plan deviation** = Difference between the least and most populous districts, divided by the ideal District population

Up to **10%** deviation is permitted, or 2,118 persons



**Census 2020 counts for MPWMD's current election district populations are NOT balanced, so the boundaries needed to be adjusted.**

<b>District</b>	<b>Total Pop</b>	<b>Deviation</b>	<b>% Deviation</b>
<b>1</b>	<b>21,904</b>	<b>722</b>	<b>3.4%</b>
<b>2</b>	<b>20,615</b>	<b>-567</b>	<b>-2.7%</b>
<b>3</b>	<b>22,927</b>	<b>1,745</b>	<b>8.2%</b>
<b>4</b>	<b>19,954</b>	<b>-1,228</b>	<b>-5.8%</b>
<b>5</b>	<b>20,511</b>	<b>-671</b>	<b>-3.2%</b>
<b>Total</b>	<b>105,911</b>		
<b>Ideal</b>	<b>21,182</b>	<b>2,973</b>	<b>14.0%</b>

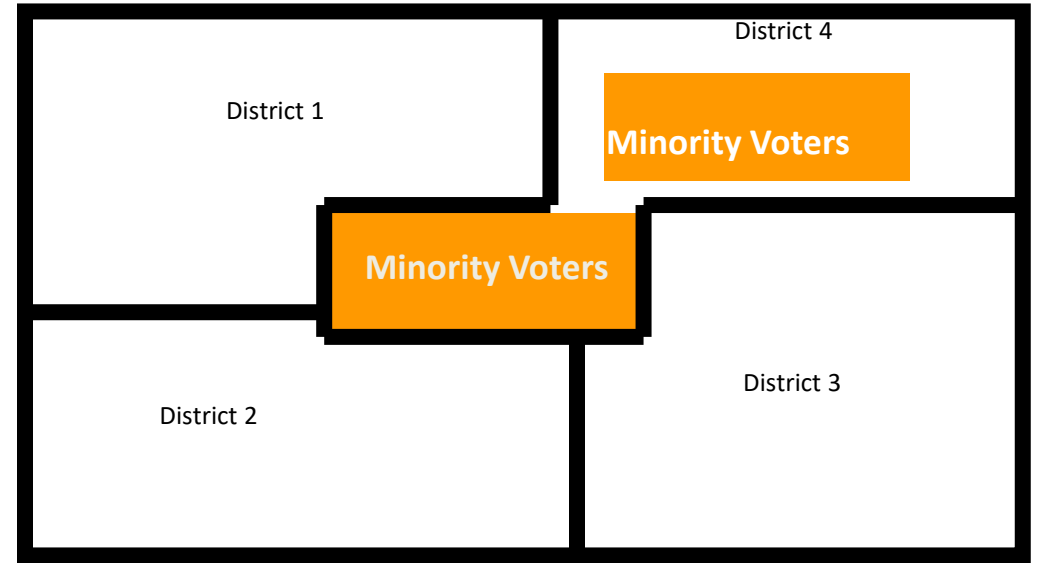
# The Federal Voting Rights Act

## “Packing” and “Cracking” are prohibited

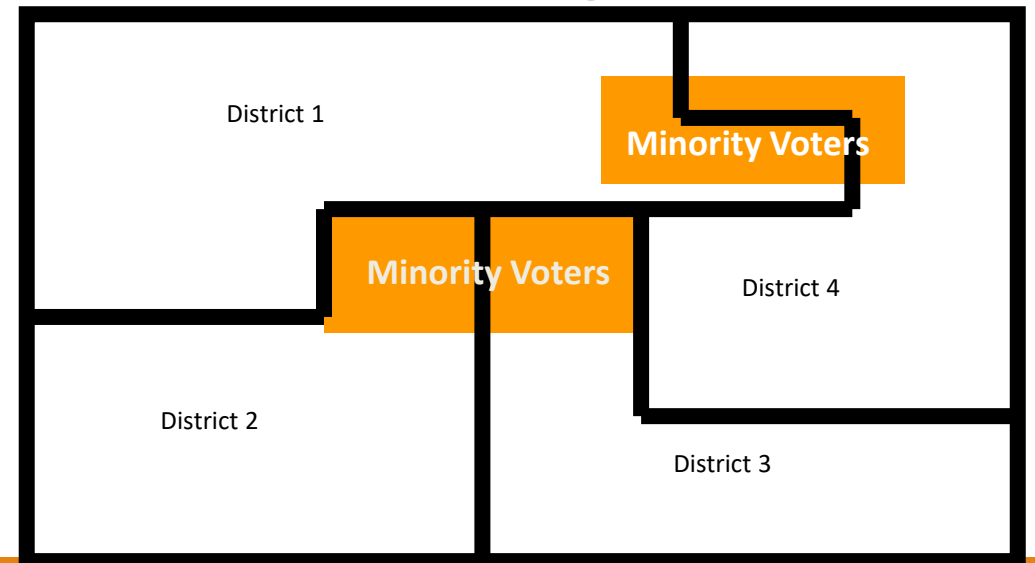
：“**Packing**’ refers to the practice of filling a district with a supermajority of a given group or party. ‘**Cracking**’ involves the splitting of a group or party among several districts to deny that group or party a majority in any of those districts.”

- *Vieth v. Jubelirer*,  
541 U.S. 267, 286 n.7 (2004)

### Packing



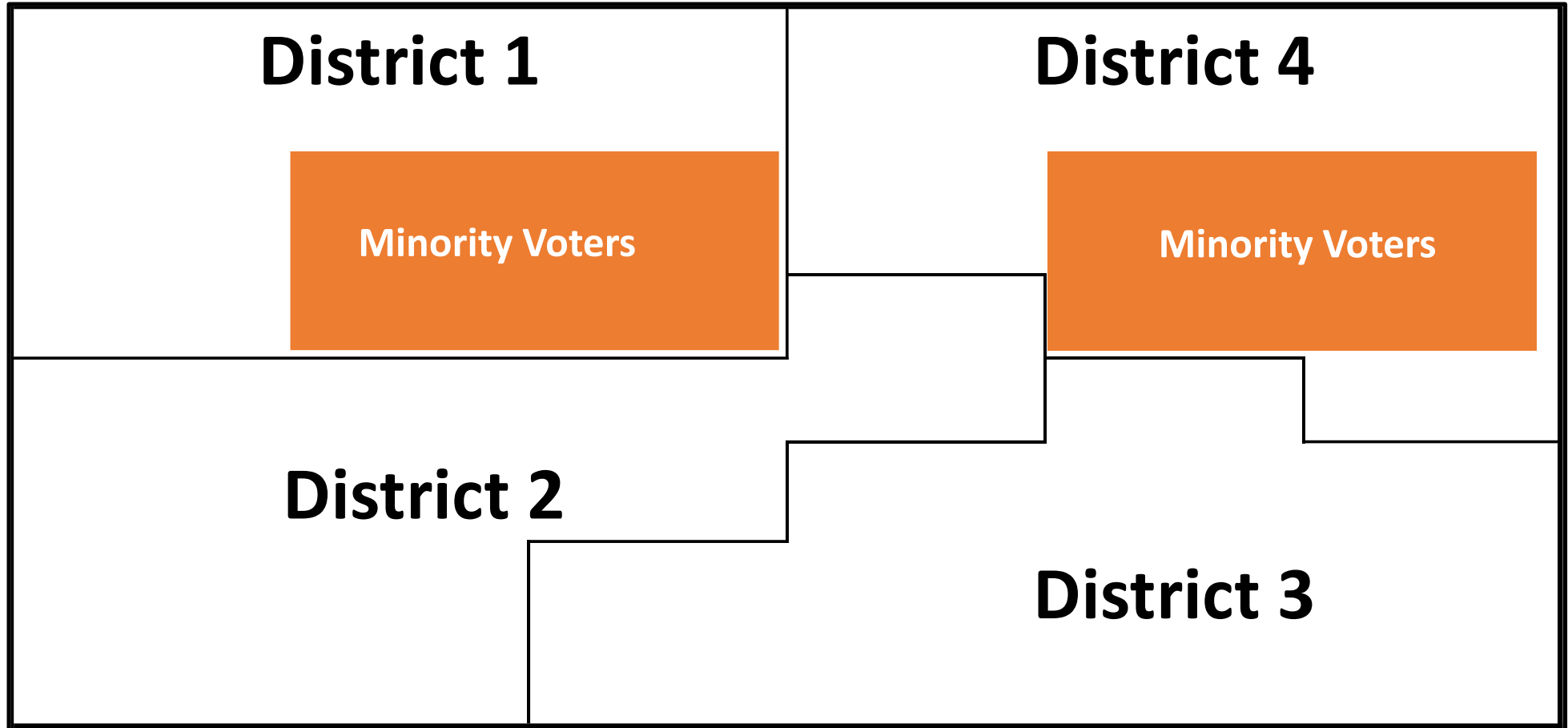
### Cracking



# Best Practice:

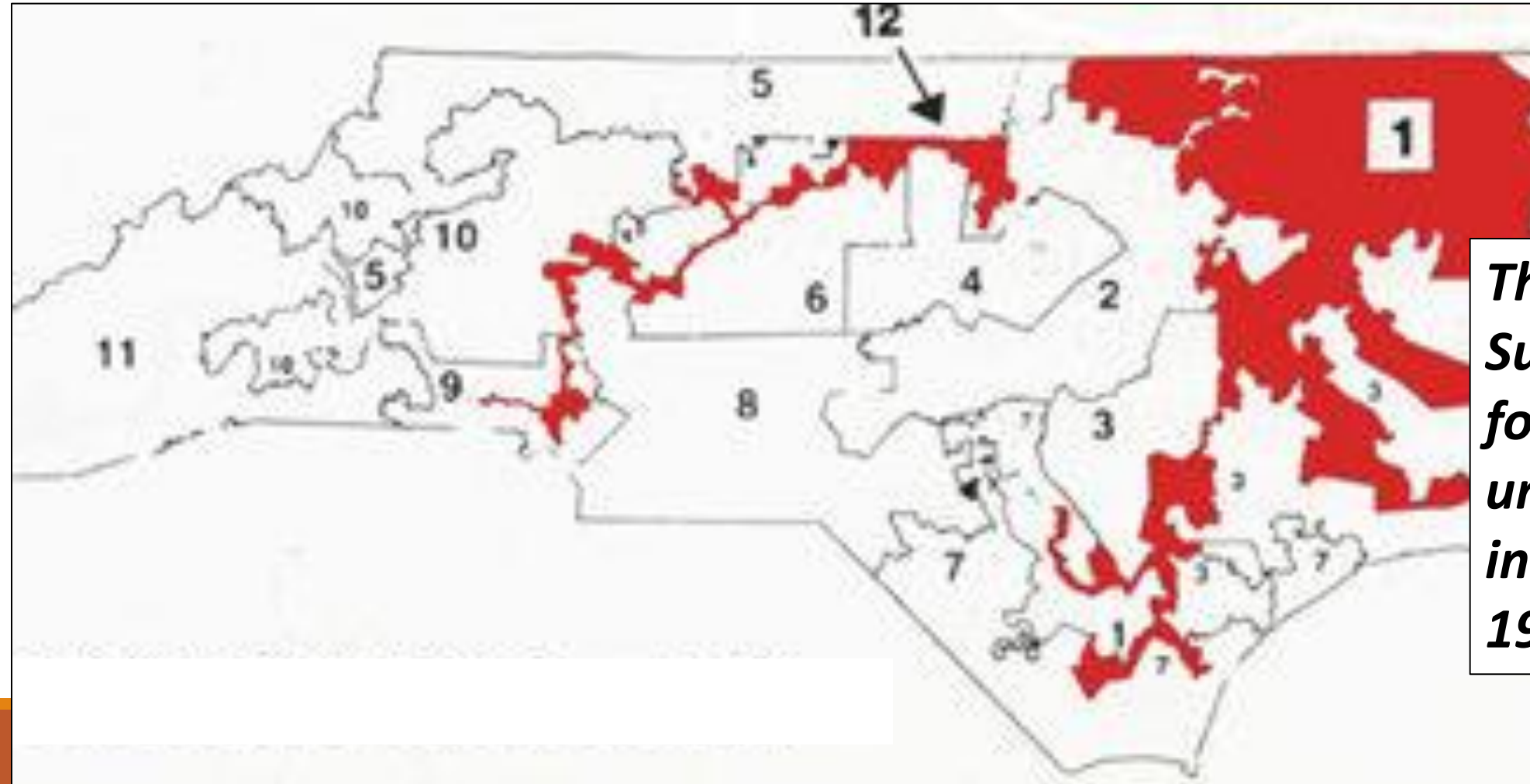
Each orange block represents protected groups intact and in separate election districts

# The Federal Voting Rights Act



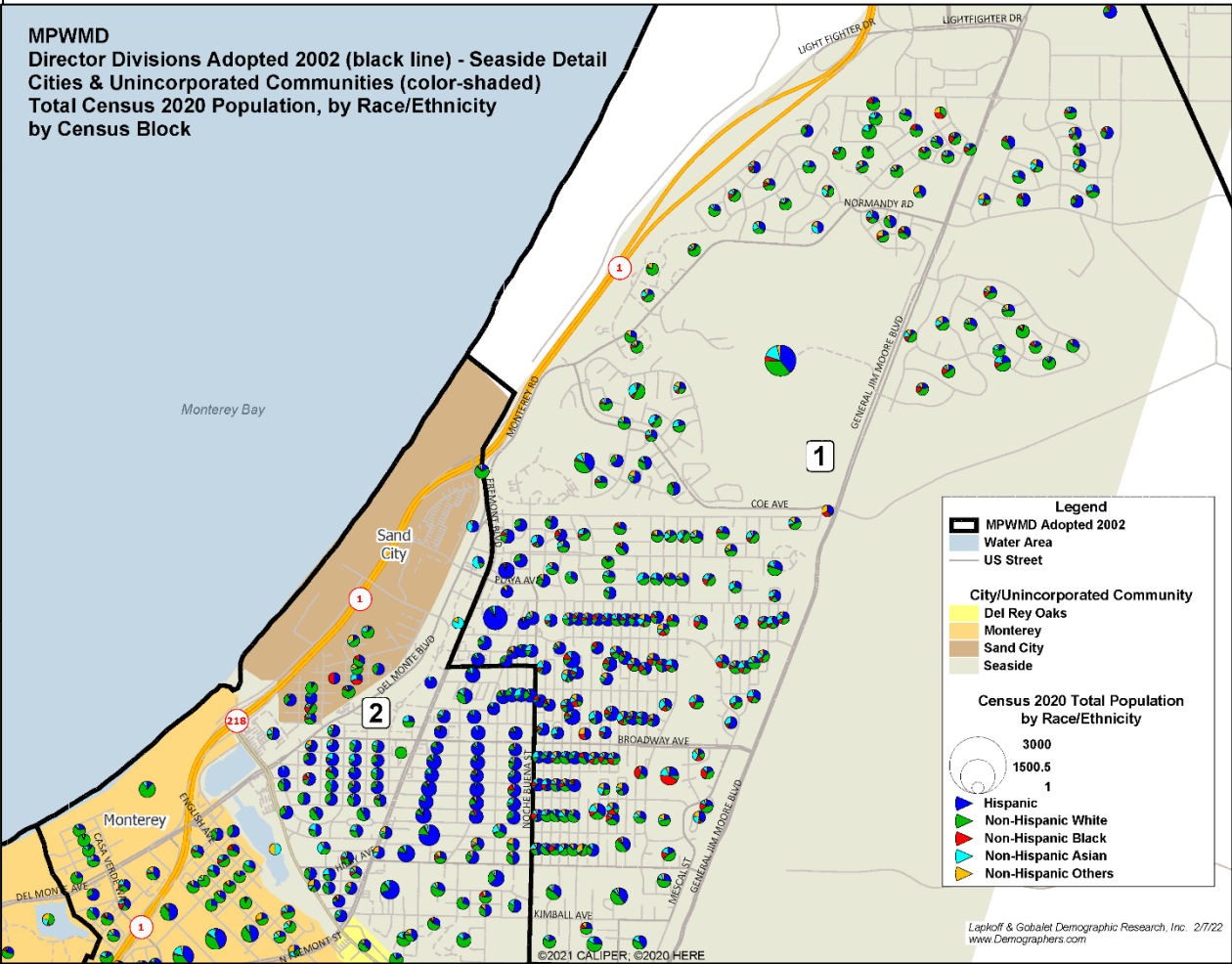
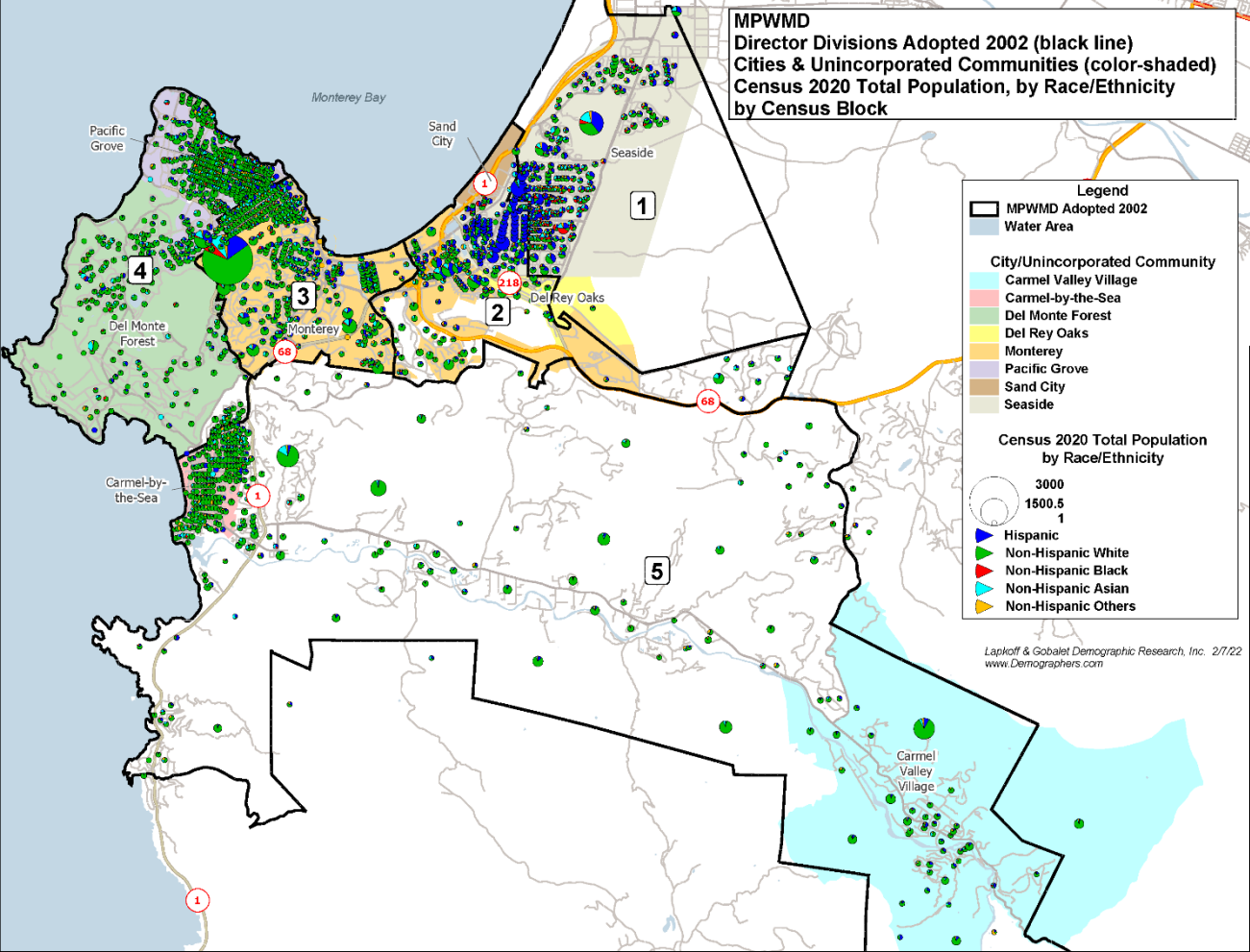
# Racial Gerrymandering is not Permitted:

## North Carolina's proposed Congressional Districts after Census 1990



*The U.S. Supreme Court found District 12 unconstitutional in Shaw v. Reno, 1993*

# 2020 Race/Ethnic Distribution in MPWMD subareas



## State Law:

**California's Election Code says the following criteria *may* be taken into account. No priority order is given.**

**...give consideration to the following factors:**

**(1) Topography**

**(2) Geography**

**(3) Cohesiveness, contiguity, integrity, and compactness of territory**

**(4) Community of interests of director divisions**

# Communities of Interest (COIs) - Examples

**COIs are contiguous areas where people share common social and economic interests and should be in a single Director-Division or be considered when drawing Director-Division boundaries:**

- ☐ Recognized neighborhoods**
- ☐ Cities and unincorporated communities**
- ☐ Areas with similar living standards, including similar income and educational levels**

# **Recommendation from Your Redistricting Advisory Commission (RAC)**



# RAC Process

- ❑ RAC met three times. Each time they met, they discussed plans and provided feedback to the demographers.**
- ❑ At the March 17 RAC meeting, Commissioners decided unanimously on a plan to recommend to the Board.**
- ❑ The recommended plan was developed by Commissioners with the assistance of the demographers!**

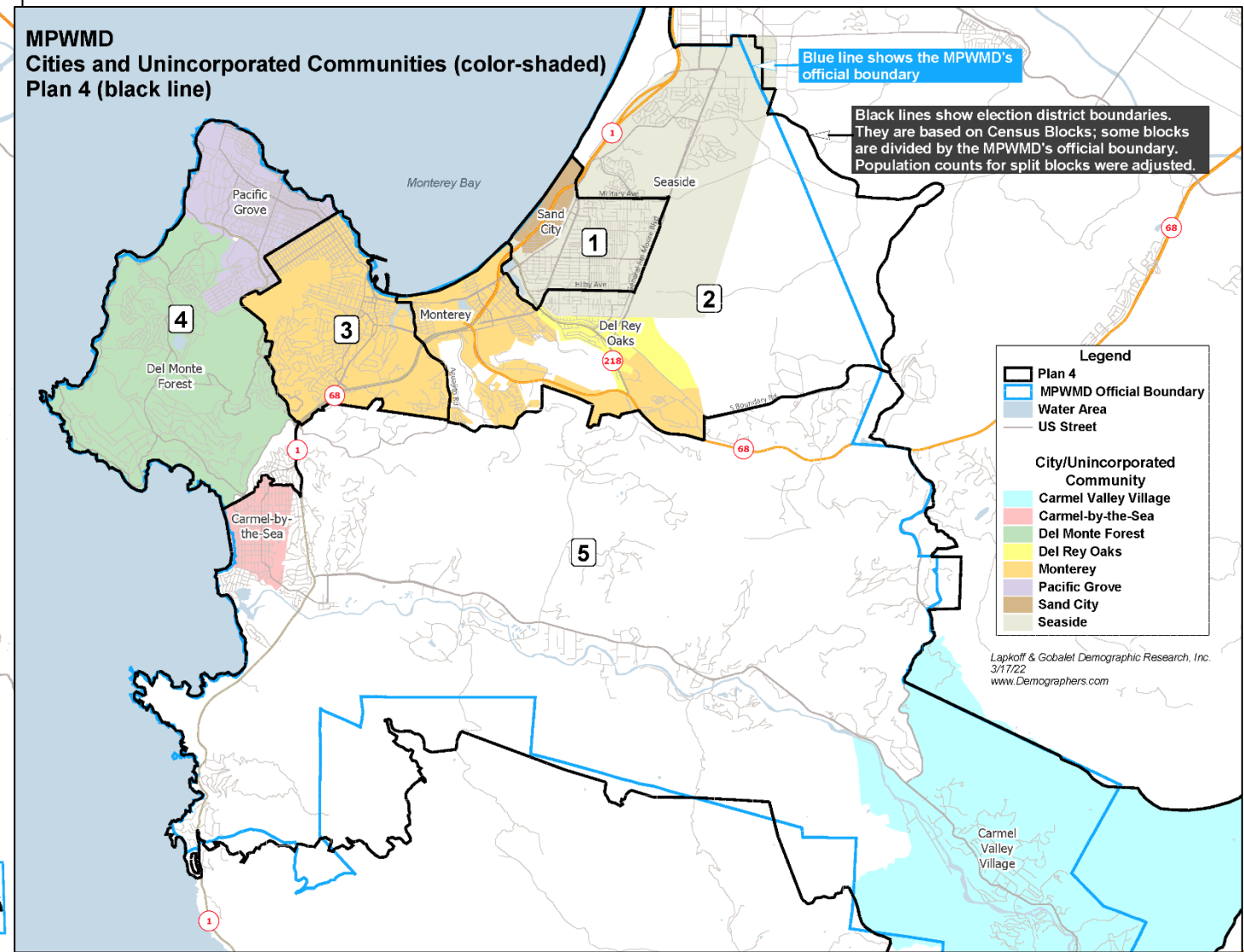
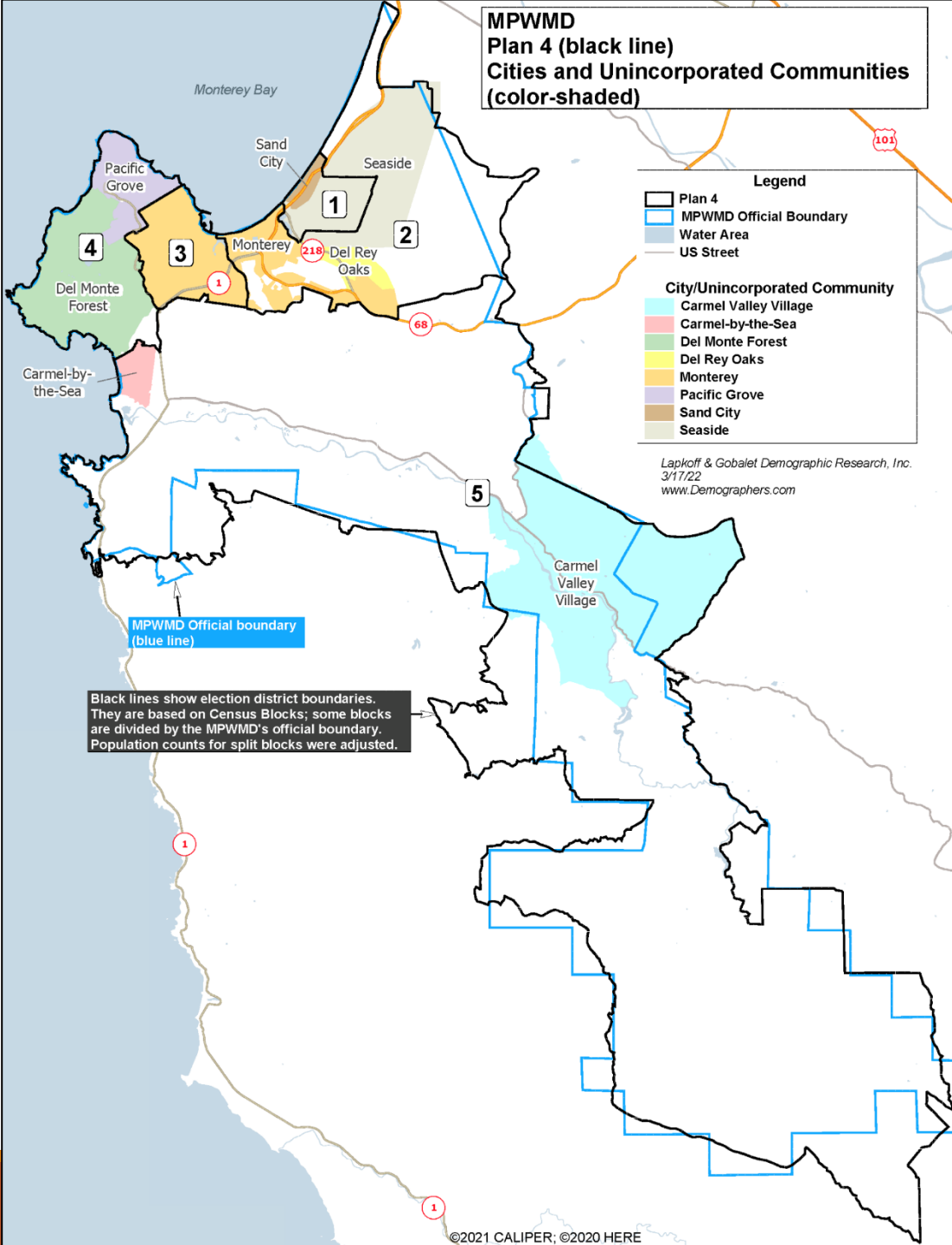
# Criteria Considered by the RAC

- Empowering the Latinx population to elect representatives of choice
- Distribution of Seaside's Latinx and African American populations
- Location of renter populations
- Household Economic status
- City limits
- Seaside's business district
- Monterey neighborhoods
- Current directors in separate election districts

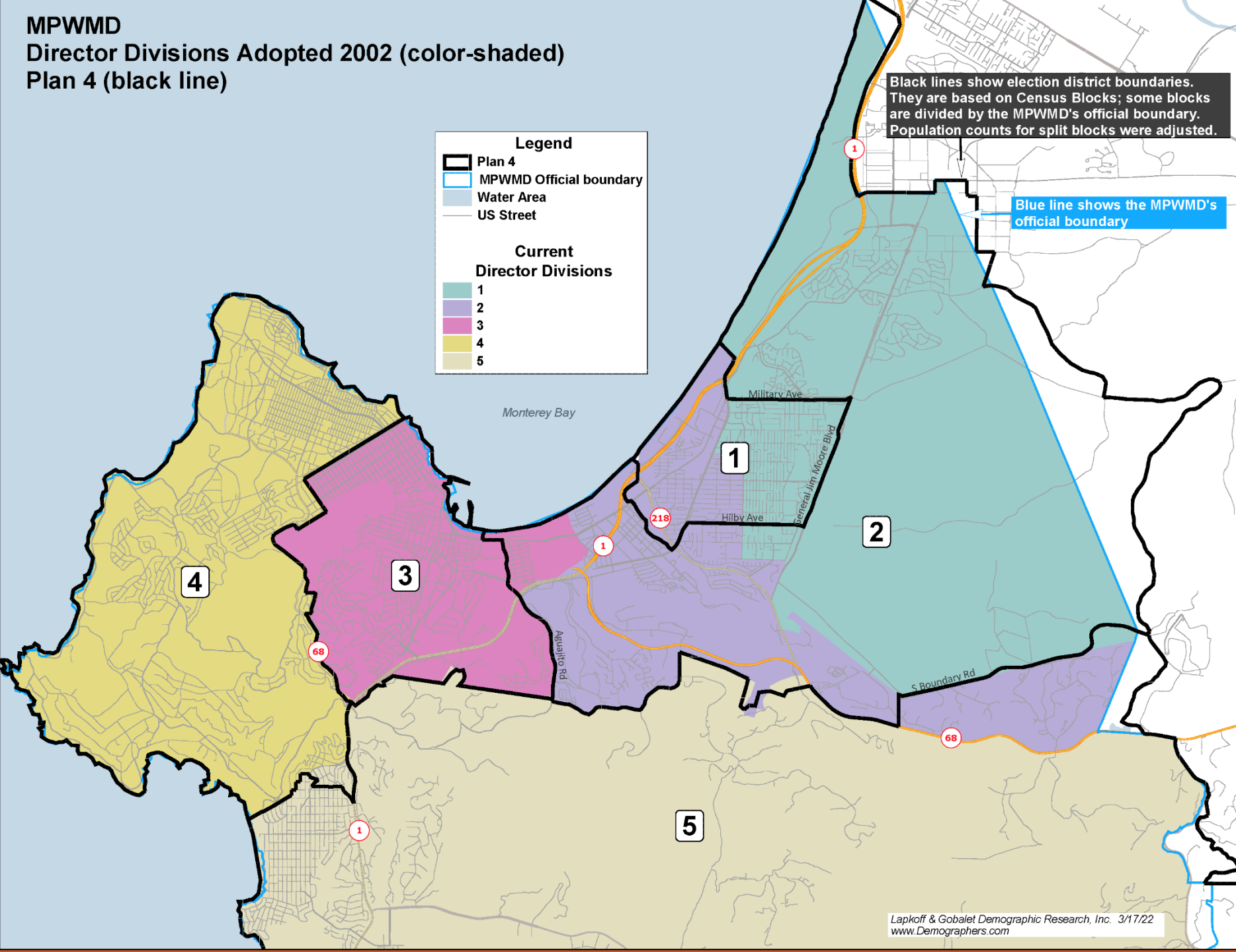
# Key Elements of RAC's Recommended Plan

- ❑ A large Latinx population share in District 1 that includes Seaside's African American population concentration. This district is very different from the current one, which divides the Latinx population.
- ❑ Other changes are relatively minor and were needed for population balance. RAC carefully considered which populations to move:
  - ❑ District 3 needed to lose population so the area east of El Estero Park (Oak Grove neighborhood) was moved to District 2.
  - ❑ After gaining population from D3, District 2 needed to lose population. An unincorporated, rural, affluent area east of Monterey was moved to District 5 (Laguna Seca Estates and Pasadera).
  - ❑ District 4 needed more population and an unincorporated area north of Carmel-by-the-Sea was moved from District 5 to District 4 using city limit as the boundary.
- ❑ City limits were used extensively as election district boundaries.

# RAC's Recommended Plan



**MPWMD**  
**Director Divisions Adopted 2002 (color-shaded)**  
**Plan 4 (black line)**



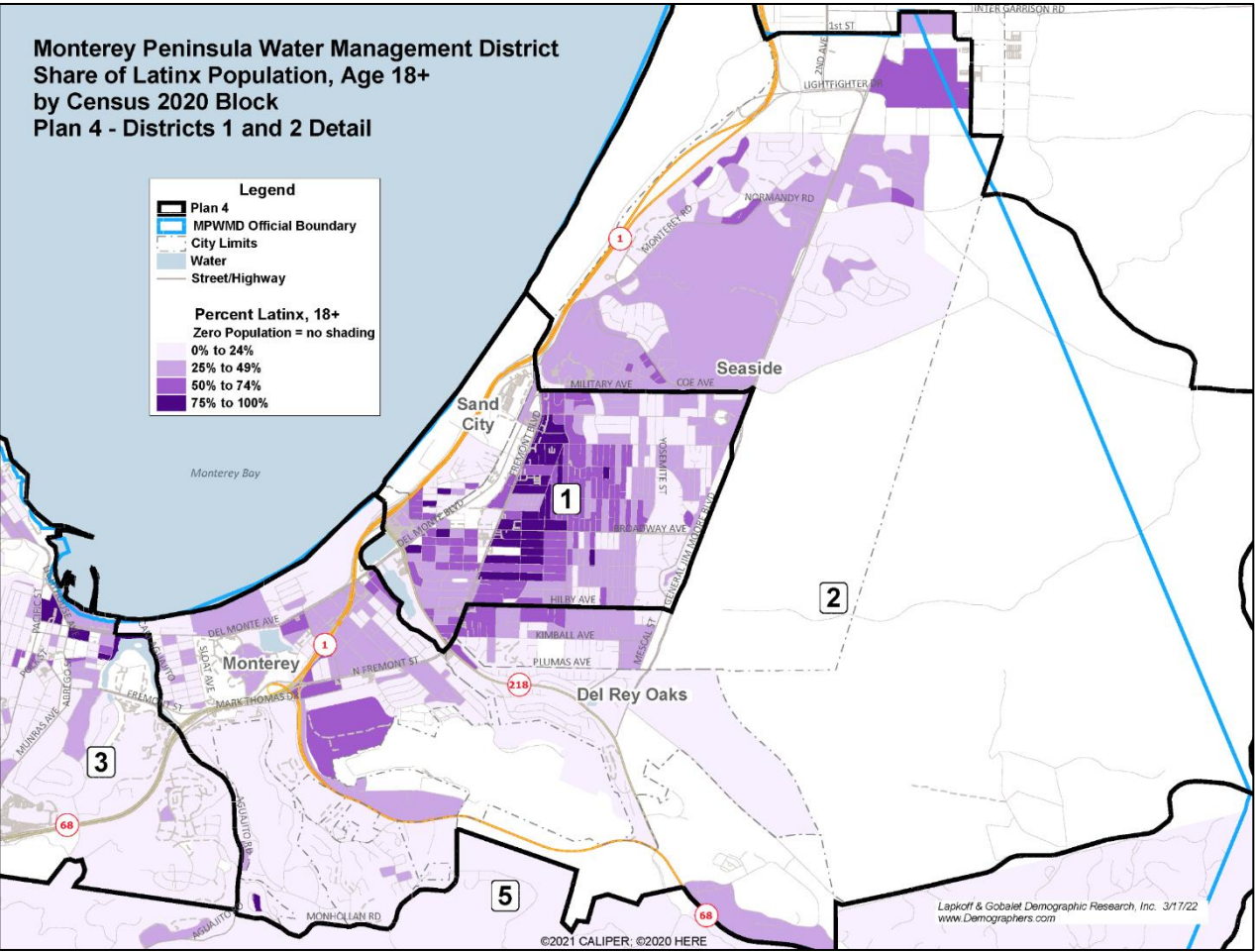
# RAC's Recommended Plan

With existing  
districts color-  
shaded

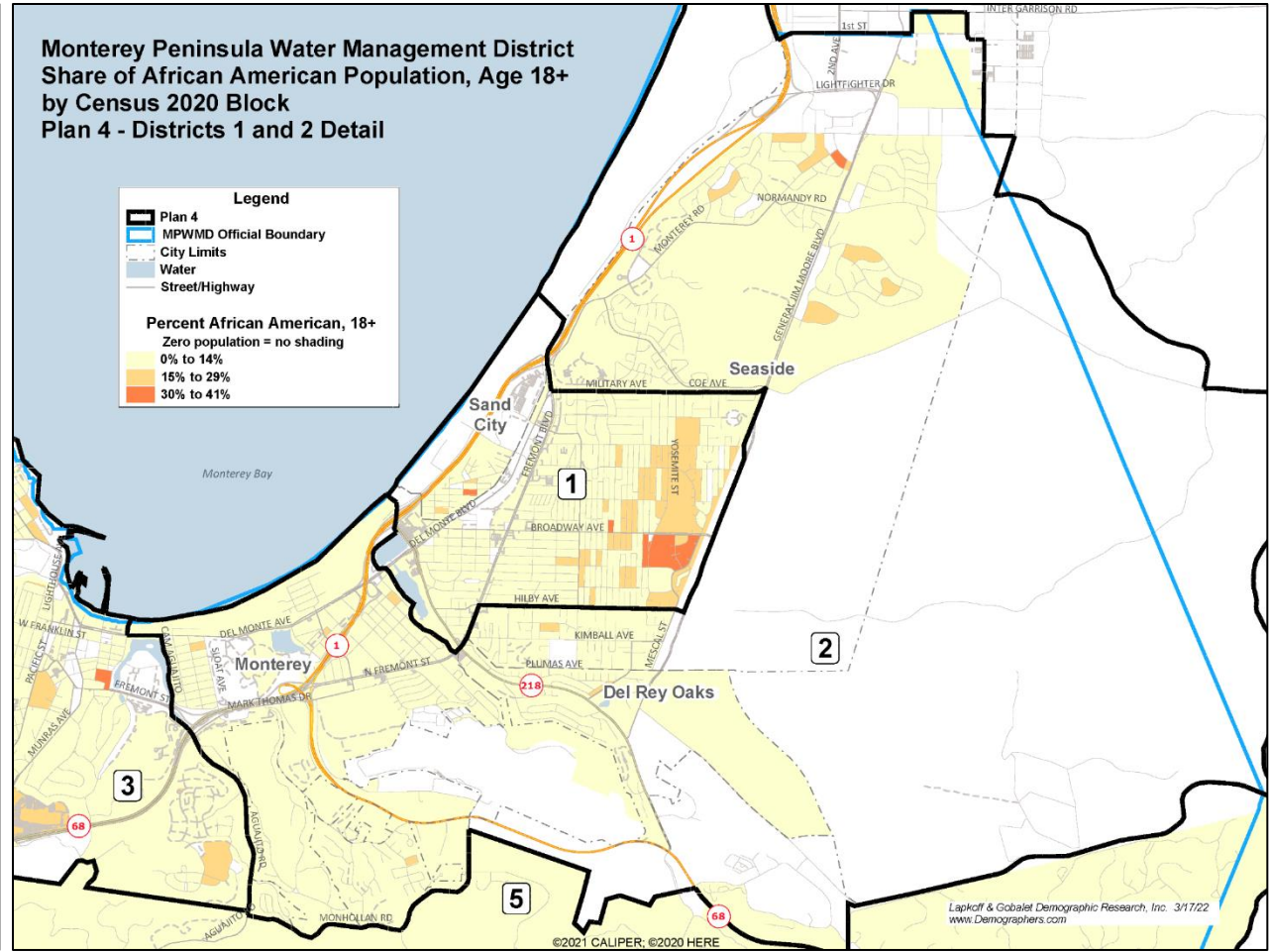


# RAC's Recommended Plan with Latinx and Black population concentrations in Seaside

Monterey Peninsula Water Management District  
Share of Latinx Population, Age 18+  
by Census 2020 Block  
Plan 4 - Districts 1 and 2 Detail



Monterey Peninsula Water Management District  
Share of African American Population, Age 18+  
by Census 2020 Block  
Plan 4 - Districts 1 and 2 Detail



**MPWMD Plan 4**

**Non-Hispanic**

District	Total Population	Latino/ Hispanic	White	Black	Asian	Other	Total
<b>Total Population Percentages</b>							
1	21,398	56%	21%	7%	10%	5%	100%
2	22,125	28%	52%	4%	11%	6%	100%
3	21,161	15%	66%	4%	10%	4%	100%
4	20,488	12%	72%	2%	10%	4%	100%
5	20,739	9%	81%	1%	6%	4%	100%
Total	105,911	24%	58%	4%	9%	5%	100%

**Age 18+ (Voting Age) Population Percentages**

1	16,451	50%	25%	8%	11%	5%	100%
2	17,661	25%	55%	4%	11%	5%	100%
3	18,676	14%	68%	4%	10%	4%	100%
4	16,981	10%	76%	2%	8%	4%	100%
5	17,768	7%	83%	1%	6%	3%	100%
Total	87,537	21%	62%	4%	9%	4%	100%

**Citizens of Voting Age (CVAP) Percentages**

1	12,957	30%	34%	13%	14%	9%	100%
2	15,522	18%	62%	5%	9%	6%	100%
3	16,306	10%	72%	4%	8%	6%	100%
4	16,533	8%	79%	2%	6%	5%	100%
5	17,511	6%	86%	0%	4%	4%	100%
Total	78,829	13%	68%	4%	8%	6%	100%

**MPWMD Plan 4**

**Non-Hispanic**

District	Total Population	Latino/ Hispanic	White	Black	Asian	Other
<b>Registered Voters</b>						
1	10,408	31%	n/a	n/a	8%	n/a
2	11,968	16%	n/a	n/a	6%	n/a
3	11,311	9%	n/a	n/a	6%	n/a
4	15,112	7%	n/a	n/a	4%	n/a
5	16,541	5%	n/a	n/a	4%	n/a
Total	65,340	12%	n/a	n/a	5%	n/a

**Actual Voters**

1	8,184	29%	n/a	n/a	8%	n/a
2	10,139	15%	n/a	n/a	6%	n/a
3	9,775	9%	n/a	n/a	5%	n/a
4	13,509	6%	n/a	n/a	4%	n/a
5	14,903	5%	n/a	n/a	4%	n/a
Total	56,510	11%	n/a	n/a	5%	n/a

**District Total Pop Deviation % Deviation**

1	21,398	216	1.0%
2	22,125	943	4.5%
3	21,161	-21	-0.1%
4	20,488	-694	-3.3%
5	20,739	-443	-2.1%
Total	105,911		
Ideal	21,182	1,637	7.7%

# Summary

- ❑ **Commission members collaborated to create Plan 4, which was enthusiastically and unanimously approved**
- ❑ **Plan features a strong Latinx/African-American district in Seaside**
- ❑ **Plan uses city limits for many election district boundaries**
- ❑ **Plan takes into account economic communities of interest, the renter population, the race/ethnic distribution, and cities and neighborhoods as communities of interest**
- ❑ **Each current Director is in their own district**



# Questions/Board Discussion

---